



## Screw Locations

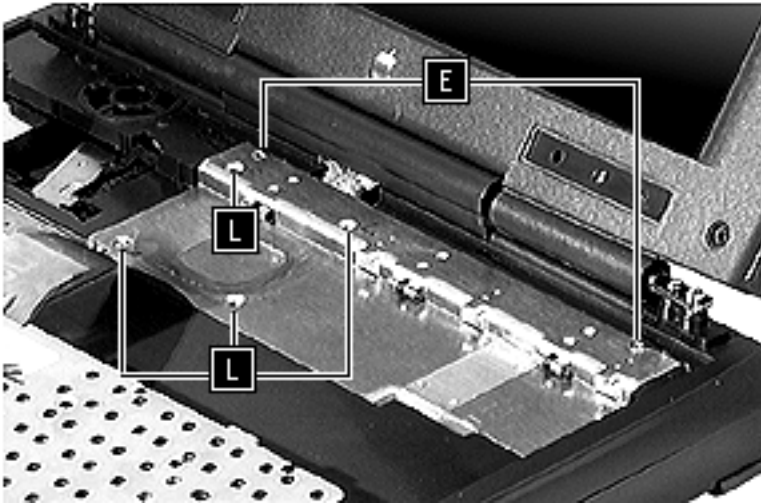
---

PowerBook 1400 Series



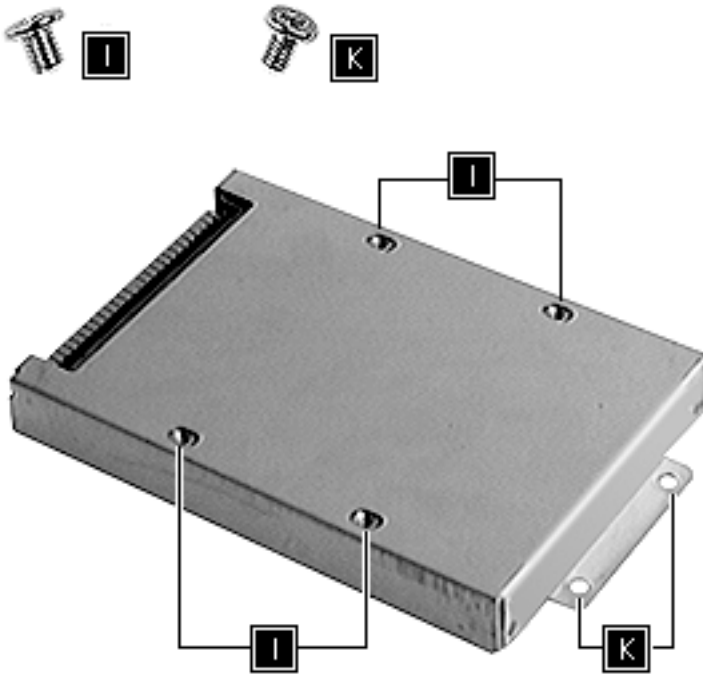


## Keyboard and Heatsink



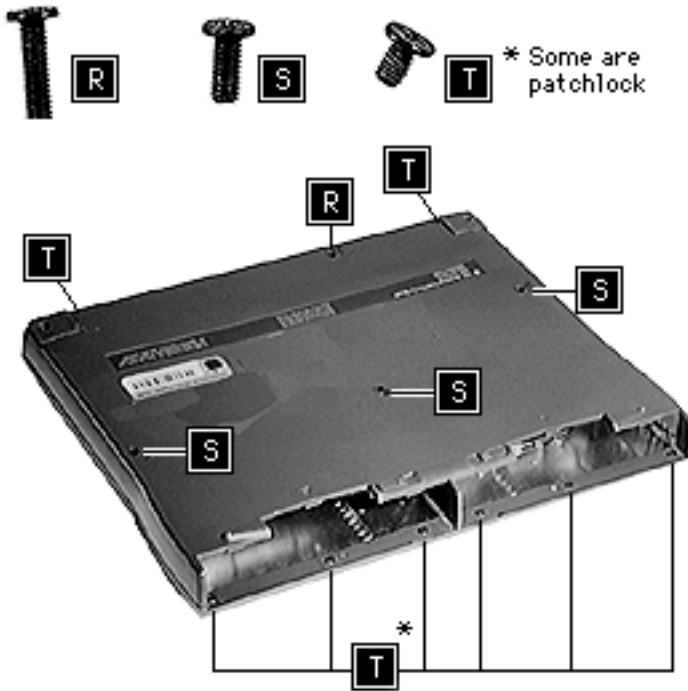


## Hard Drive



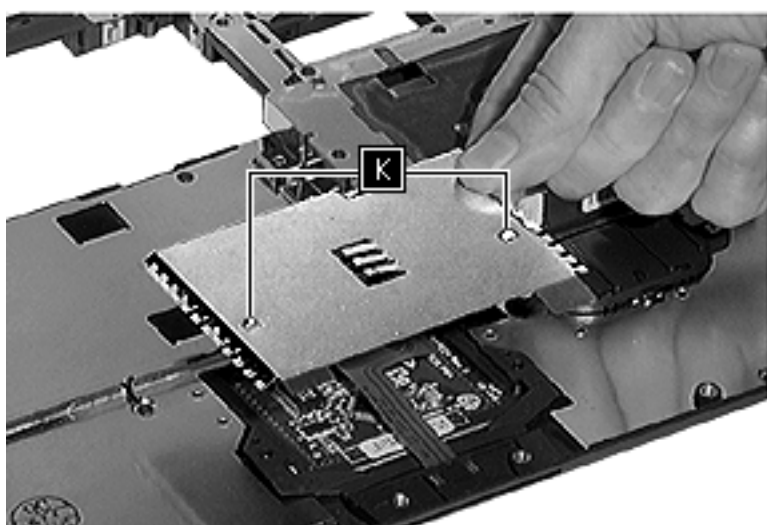


## Top Case



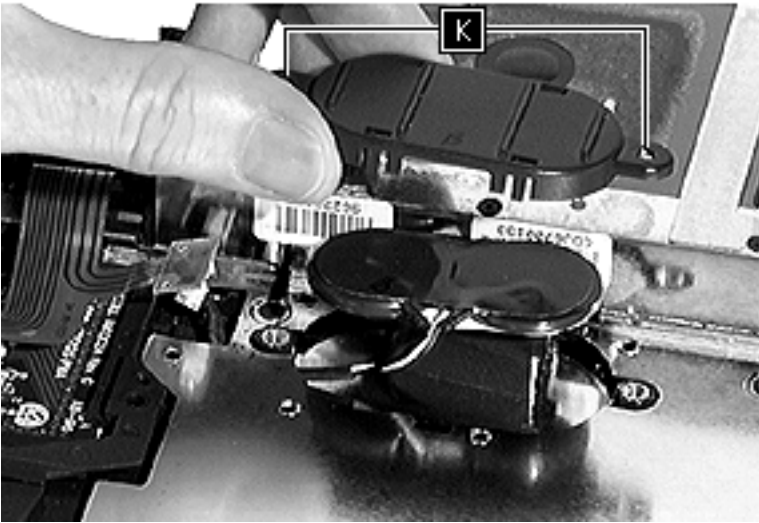


## Trackpad



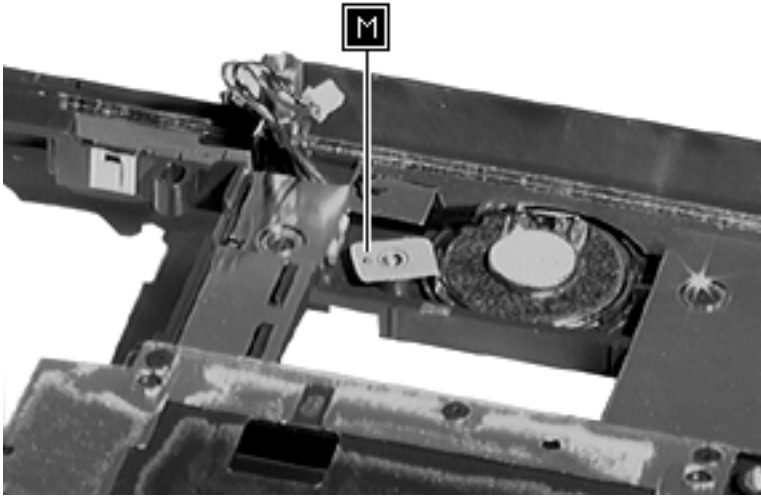


## Backup Battery



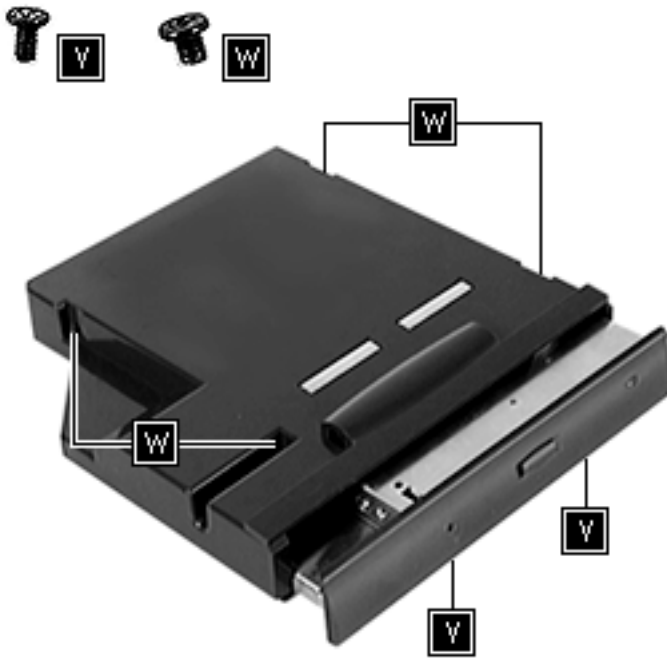


# Speaker





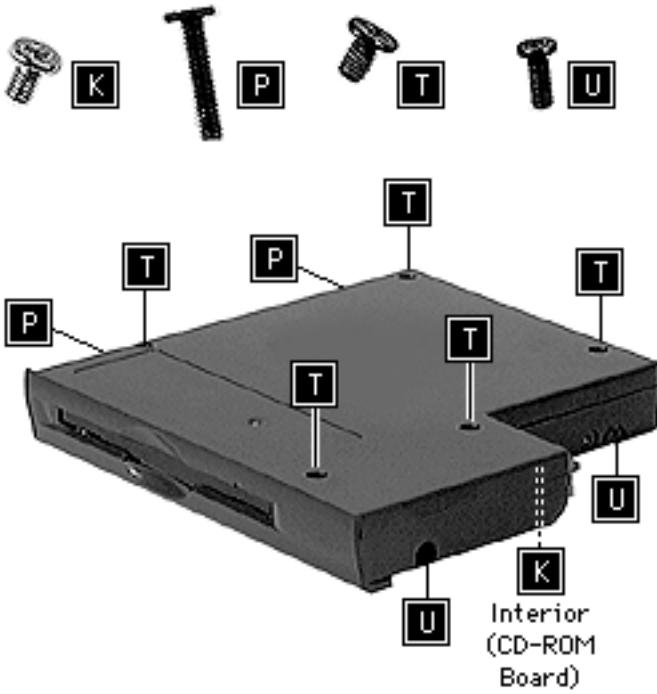
## CD-ROM Drive Assembly







## Floppy Drive Assembly





## Microprocessor Daughterboard

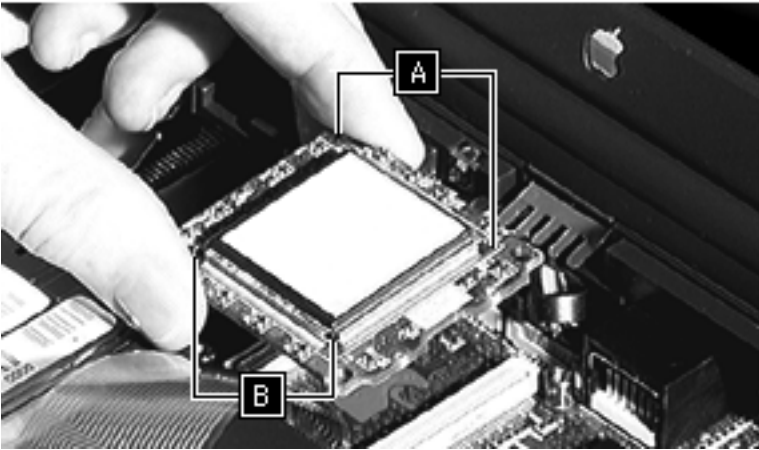


Note: Top 2 may have already been removed in the display assembly take-apart.

A



B



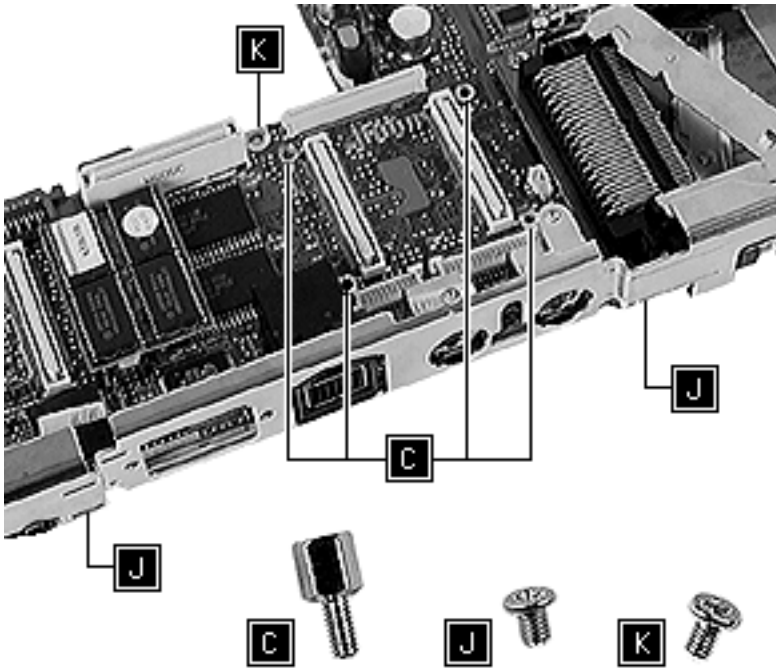


# Feet

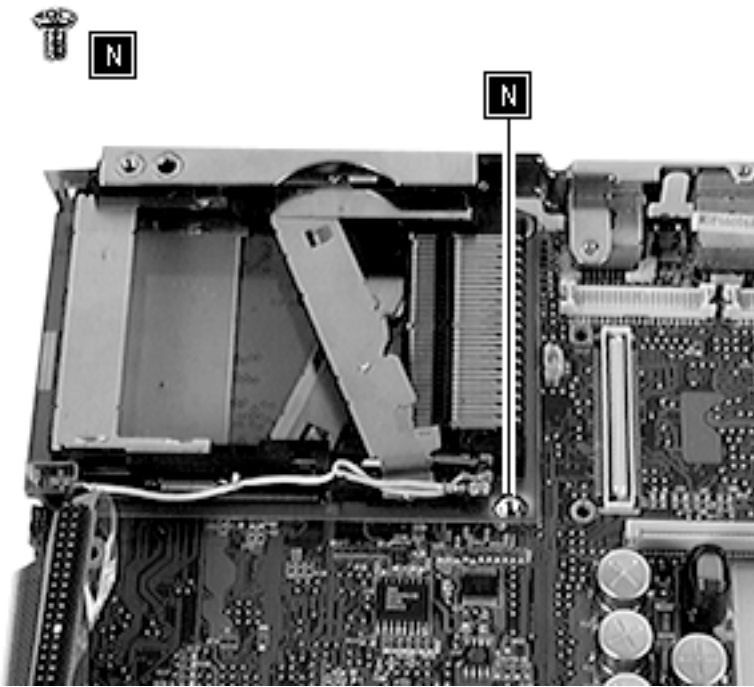




## Logic Board



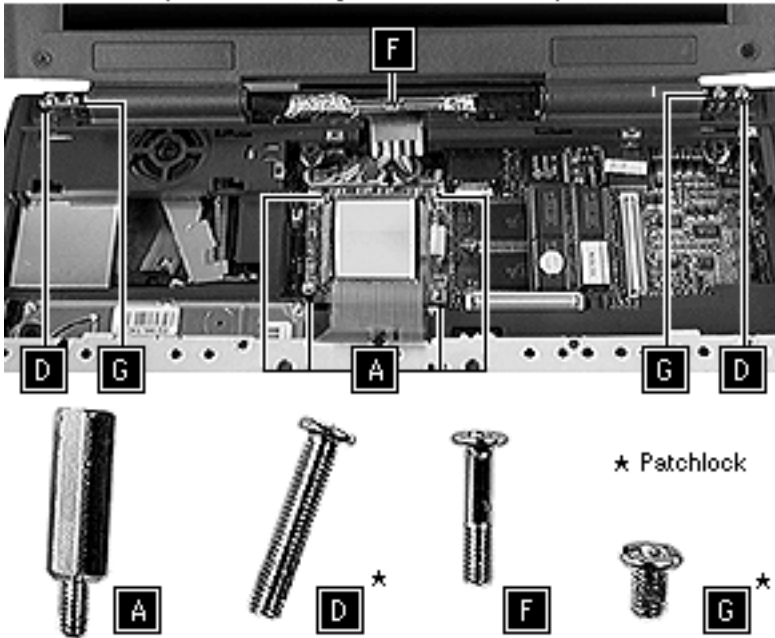
## PCMCIA Eject Mechanism





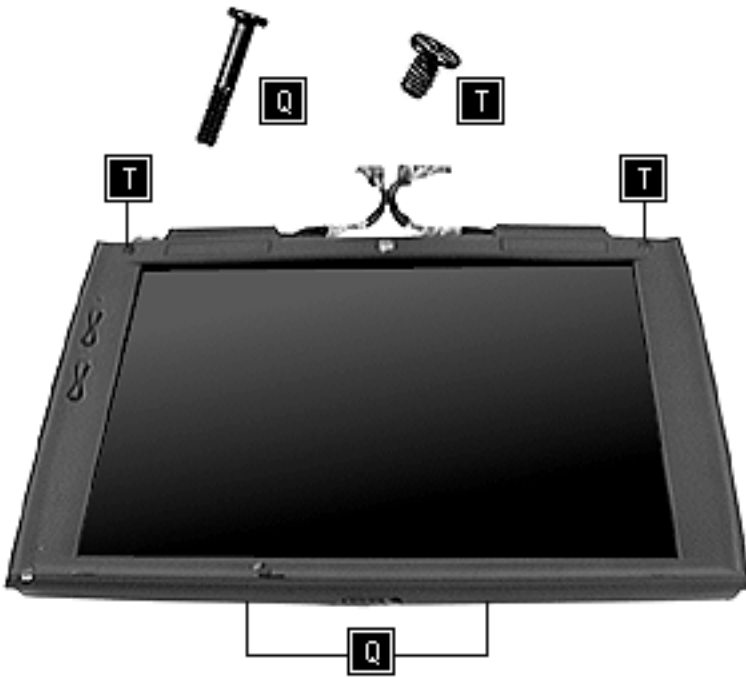
## Display Assembly

**Note:** Top 2 "A" screws may have already been removed in the microprocessor daughterboard take-apart.



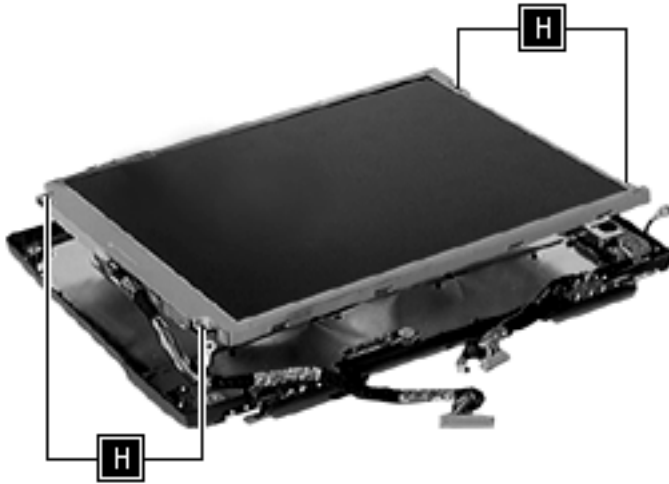


## Bezel





# Display



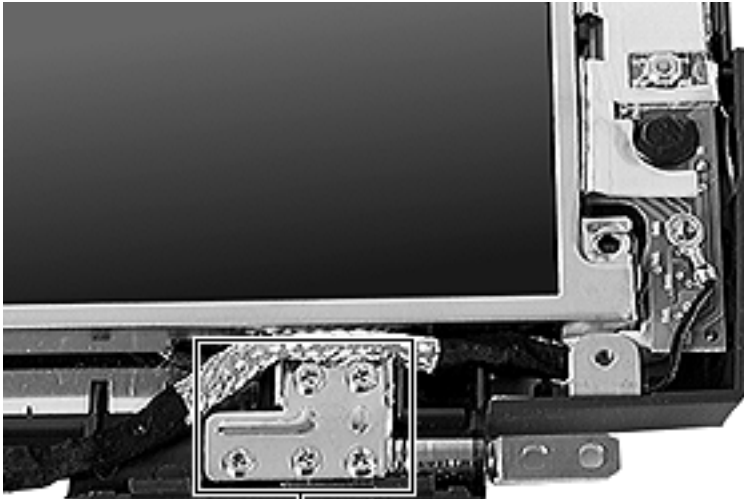
★ Patchlock







## Clutch Assembly



K



K

Patchlock

